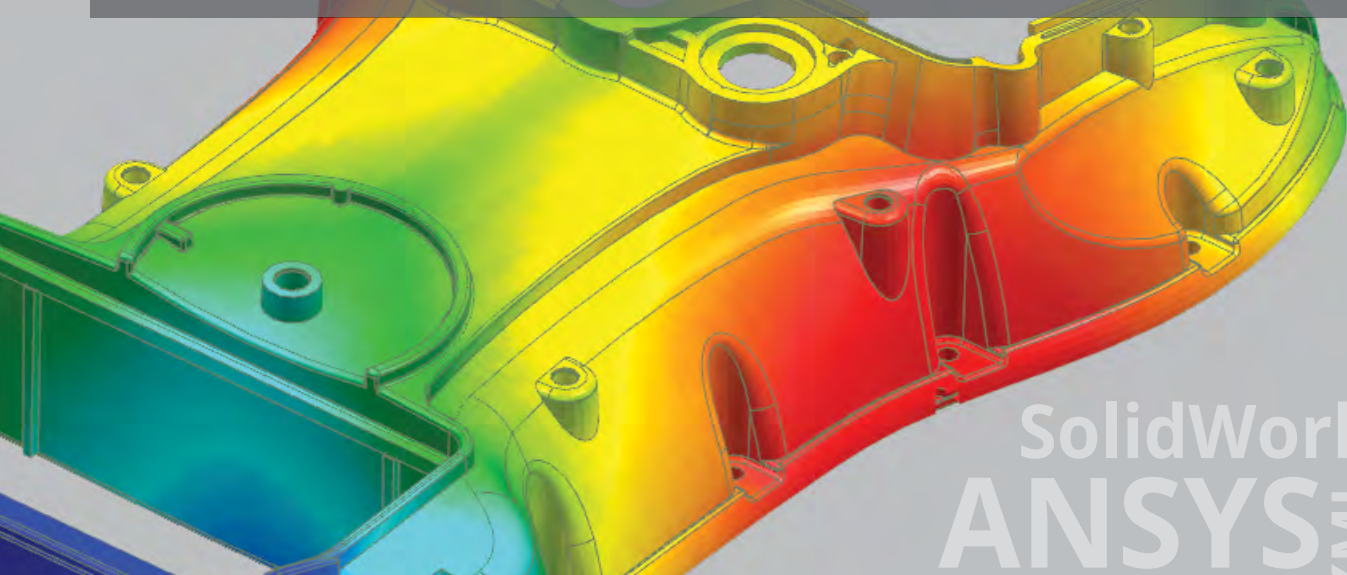




eXporter

Bridging the gap between data source and CAE software



SolidWorks
ANSYS
XML
XLS
S
ge

 PLM EGYPT Industrial solutions for CAD/CAM/CAE/Tooling/CNC Application		PLM EGYPT	
		Industrial Solutions for CAD /CAM /CAE /Tooling /Inspection Application	
	Address	1 DR Mohamed abou state from 23 Joseph Tito St. New Nozha, Cairo, Egypt	
	Telefax	+02 26222261	
	Mobile:	+02 01000070422	+02 011 29500936
	Zip code	4473215	
	E.MAIL	INFO@Egyptplm.COM	
	WEBSITE	www.Egyptplm.COM	

eXporter is the add on module which primarily helps bridge the gap between data source and computer aided engineering (CAE) software.

The Challenge

- Finding advanced property data for linear and non-linear CAE calculations in a ready to use solver format
- Importing data from source into CAE software without the need for additional data processing, copying, pasting and retyping
- Obtaining reliable inputs for material properties thus avoiding dangerous and costly errors
- Carrying out multiple and repeatable design tasks in the most efficient way possible

The Solution

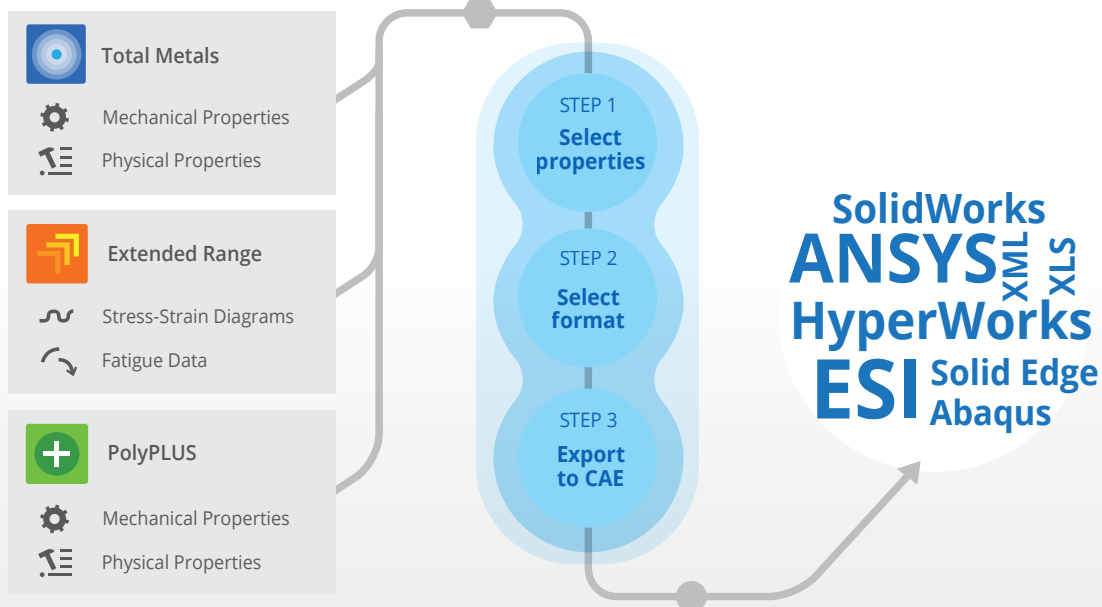
- ✓ eXport a wealth of data for use in multiple design activities, from mechanical properties to stress-strain curves
- ✓ Simple 3 step process for selection, checking and importing data into a wide range of top CAE solver formats
- ✓ Fast and accurate transfer of data without the need for data processing or retyping

The Benefits

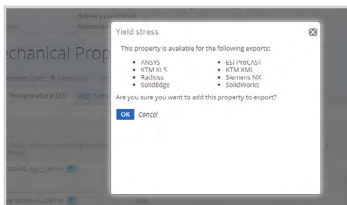
- Tremendous time savings, whilst relieving you from tedious retyping
- Increasing accuracy through elimination of data editing errors
- Streamlining and systemizing data acquisition workflow



Whether you want to move data from Total Materia directly to CAE software or simply export in excel or .xml, eXporter provides all the functionality you need. In the form of a simple 3-step wizard, it provides multiple-format data exports in mere seconds.

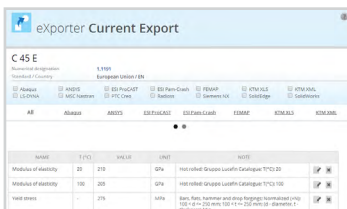


Please Note: A maximum of 100 data set exports allowable per concurrent license for the duration of the subscription. All previous exports are available at any time and re-usable an unlimited number of times for the duration of the subscription.



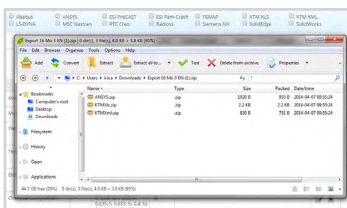
Export from the ultimate resource

Total Materia offers the world's largest material properties resource and it is now possible to select data from a collection of over 450,000 materials and 20 million property records, and then export ready for use in the next step of the design process.



Comprehensive choice of CAE software formats

eXporter can be used to export critical material data for advanced calculations such as mechanical, physical, stress strain and cyclic data in a number of CAE software compatible formats. From bespoke xml., to simple xls. eXporter makes the transit of data from source to software quick and easy.



Seamless integration of Total Materia modules

Maximizing the potential of eXporter, the entire Total Metals and Extended Range data sets can be used to find the properties of interest. With full access to the largest international cross-reference tables and comparison functionalities, the full power of Total Materia can be utilized to ensure the selection of data for export is backed up by informed and traceable decisions.